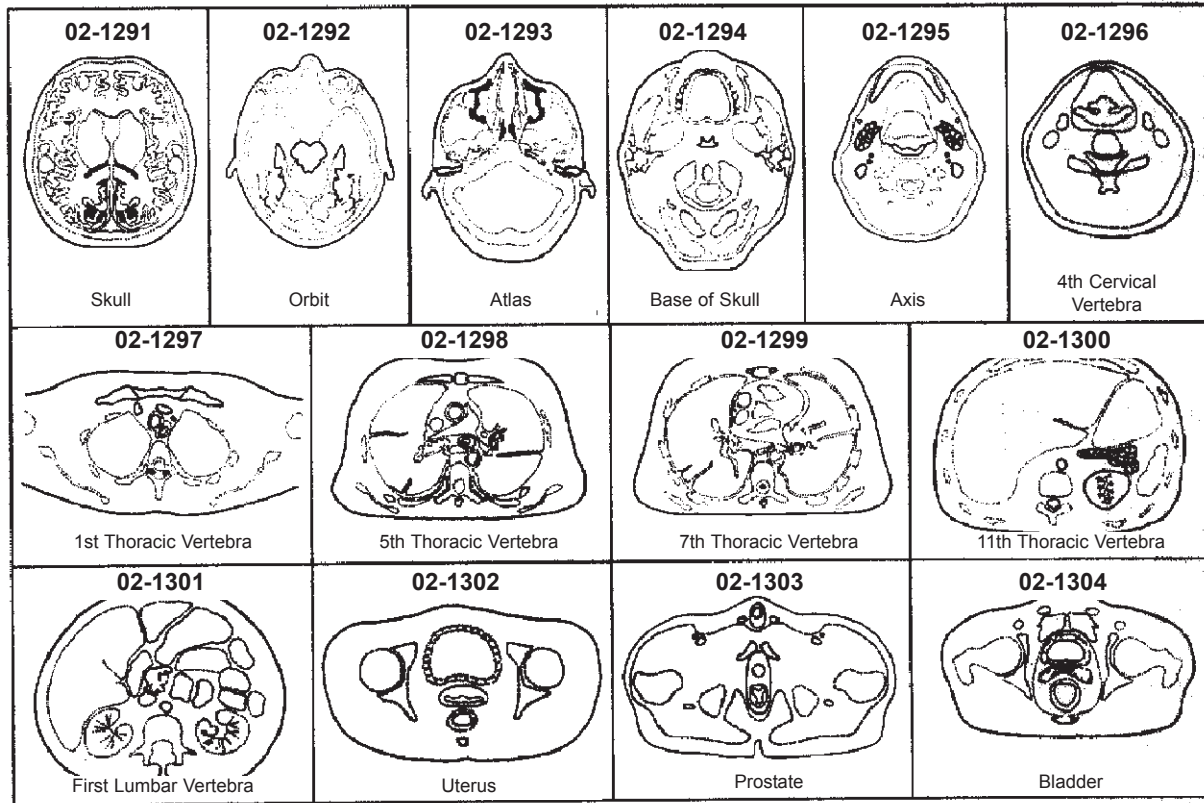


# TREATMENT PLANNING



Additional drawings available:

- 02-1336 (#92) Drawing AP Esophagus/Stomach
- 02-1310 (#94) Drawing AP Upper Torso Male Arms Extended
- 02-1313 (#95) Drawing Opp. Oblique Wedge Fields
- 02-1314 (#96) Drawing PA Mantle with Arms Extended
- 02-1315 (#97) Drawing Right Angle Wedge Fields
- 02-1316 (#98) Drawing Left Angle Wedge Fields
- 02-1317 (#99) Drawing Double Arching
- 02-1318 (#100) Drawing Opp. Oblique Wedge Fields (with Half Beam Block)